

# QD™

## Ink Proofing & Color Testing System Specifications & Options



The Most Versatile Ink  
Proofing System Available!

patent # 8,783,180

### QD™ Proofer Assemblies (Flexo)

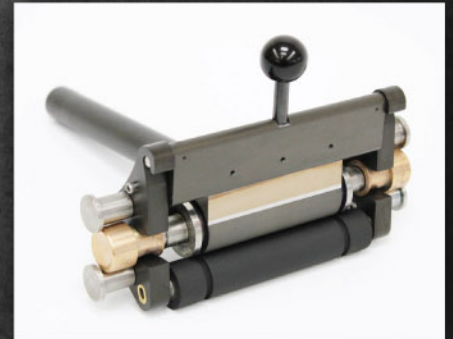
#### Standard QD™ Proofer

Anilox: 1" diameter x 2.75" face length (25.4mm x 69.8mm)

Print Width: 2.5" (63.5mm)

Rubber Roll: 0.75" diameter x 2.75" face length (19mm x 69.8mm)

Will accept any Harper proofer family Anilox or rubber roll



# 83110.005



# 81100.111

#### QD™ Plus Proofer

Anilox: 1" diameter x 5" face length (25.4mm x 127mm)

Print Width: 4.5" (114.3mm)

Rubber Roll: 0.75" diameter x 5" face length (19mm x 127mm)

Will accept any Harper Echocel-Junior "Plus" Anilox or rubber roll



## QD™ Table

Table: Width 5" Height 4" Push Handle Height 8.75"



**STANDARD** - 22" (560mm) track & table  
Stroke length: 17.5" (444mm)  
Usable proof length: 10.5" (266mm)  
Footprint: 8" wide x 27" long

\*QD Flexo w/ Short Manual Table #83110.001



**LONG BED** - 31.5" (800mm) track & table  
OAL 35.5" w/o Unwind Stand  
OAL 40.5" with Unwind Stand  
Stroke length: 27" (686mm)  
Usable proof length: 20" (533mm)  
Footprint: 8" wide x 48" long  
with unwind stand

\*QD Flexo w/ Long Bed Motorized  
Table #83115.001 shown

## QD™ PLUS Table

Table: Width 7.25" Height 4" Push Handle Height 8.75"



**STANDARD** - 22" (560mm) track & table  
Stroke length: 17.5" (444mm)  
Usable proof length: 10.5" (266mm)  
Footprint: 11" wide x 27" long

\*QD Plus Flexo w/ Short Manual  
Table # 83119.001 shown



**LONG BED** - 31.5" (800mm) track & table  
OAL 35.5" w/o Unwind Stand  
OAL 40.5" with Unwind Stand  
Stroke length: 27" (686mm)  
Usable proof length: 20" (533mm)  
Footprint: 11" wide x 48" long  
with unwind stand

\*QD Plus Flexo w/ Long Bed Motorized  
Table #83118.001 shown

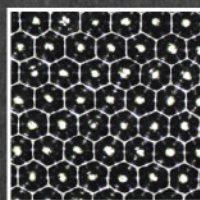
## Laser Engraved Ceramic Proofer Anilox

Laser engraved ceramic  
proofer rolls are available from:

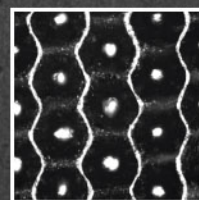
2000 CPI x 0.5 BCM 60°

to

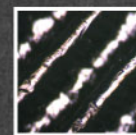
70 CPI x 33 BCM 89° XTR



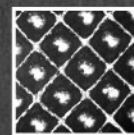
60° Hex



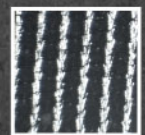
30° Hex  
Channel



45° Trihelical



45° Quad



89° XTR

## Standard Substrate Clamp

- Standard: 4" max substrate width  
Plus: 6" max substrate width
- Place clamping roller in park position
- Place substrate in middle of bed and  
line up at table edge
- Move clamping roller to lock position
- Pull substrate from opposite end of bed  
to lock in place
- Substrate should be centered down the  
entire length of table



Park Position



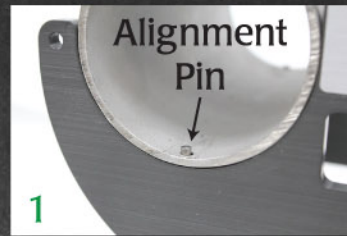
Lock Position



## Optional: Unwind Stand

1. Mandrel for max. of 6" paper diameter x 4" width<sub>(standard)</sub> or 6" Width<sub>(plus)</sub> with 3" core
2. Lift mandrel from pins on stand and insert in core
3. Reposition mandrel on un-wind stand pins and pull substrate under clamping roller (park position)
4. Pull out as much material as needed and then drop the clamping roller down to the lock position

**Note:** Unwind stand is standard on all motorized tables



## QD™ Gravure Option:

Cylinder Dimensions: 1" diameter x 2.75" face length (25.4mm x 69.8mm)

- 70A mat is supplied as a table cushion
- Gravure configuration requires ink to be applied on backside
- XDI imaged cylinders can be used for projects such as: conductive ink and image testing
- They can be made from your design file
- The Gravure proofer mounts on the table the same as the Flexo proofer
- Standard anilox rollers can be used for solids and coatings



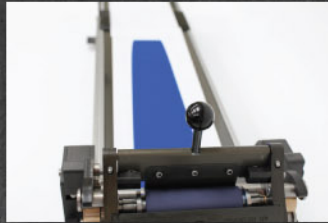
## Gravure Cylinder Option: Harper XDI Engravings

- Harper XDI imaged cylinders are custom made to your design and laser engraved in ceramic
- Three standard tone scale/vignette designs are available. Volumes are adjusted to your requirements
- Examples: circuits, logos, woodgrain etc.....



## QD™ Motorization Option:

- Available in long or short table models
- Long Table: 26" of stroke, 19" of proof
- Short Table: 16.5" of stroke, 9.5" of proof
- Electric: Variable speed 15 to 450 in/min
- Pneumatic 1000 in/min constant speed
- Constant return to home speed
- Travel limit switches for each end of stroke
- Universal power supply accommodates the Americas and Europe 85 - 265 VAC 45W 50/60Hz
- Pneumatic has built in regulator
- Un-wind stand standard on the QD motorized

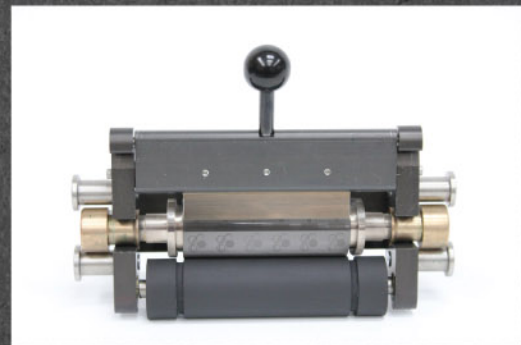


## QD™ Offset Gravure Option:

### 1" Diameter Cylinder and Transfer Roll

Offset Gravure proofing allows researchers and product developers the flexibility to print onto ridge flat objects like glass, plastics, wood up to 1/8" thick and on odd shaped or groups of small objects.

- Utilizes an XDI™ imaged cylinder and transfer roll of the same 1" diameter
- Can be used by hand or with any QD table using OSG C-Clamps
- Transfers from an XDI engraved cylinder right reading to a transfer roll then to the substrate or object
- Used for product and functional gravure printing
- Can also be used with nesting fixture to print on odd shaped or grouped items (fixtures are extra)

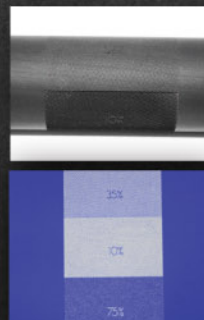


# 83119.026

## Laser Engraved Imaged Transfer Rolls

**\*Can be used with any anilox\***

- Available in 45, 55 or 70 durometer and engraved at 65, 100, 150 or 175 LPI
- Custom engraved with your logo or features such as tone scales, shaped patches, circuit patterns and almost any 2.356" repeat image
- Helpful for measuring ink graphic and functional qualities
- Quick and easy way in prepress to correct for varying dot gains of different substrates



## Proofer Roll Storage



standard width only  
# 82700.000



standard  
# 82701.000

plus  
# 82702.000